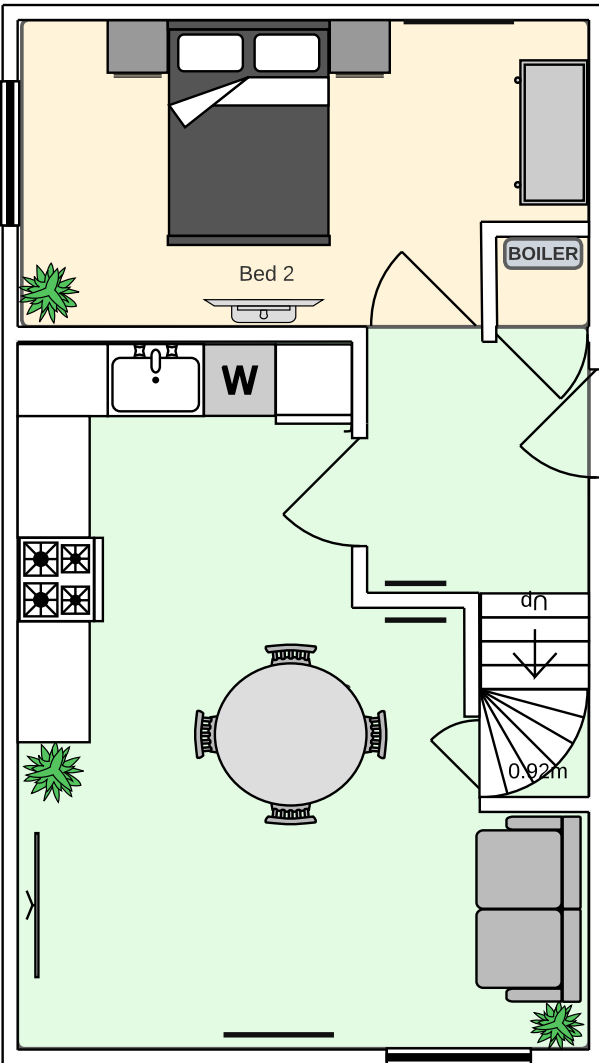


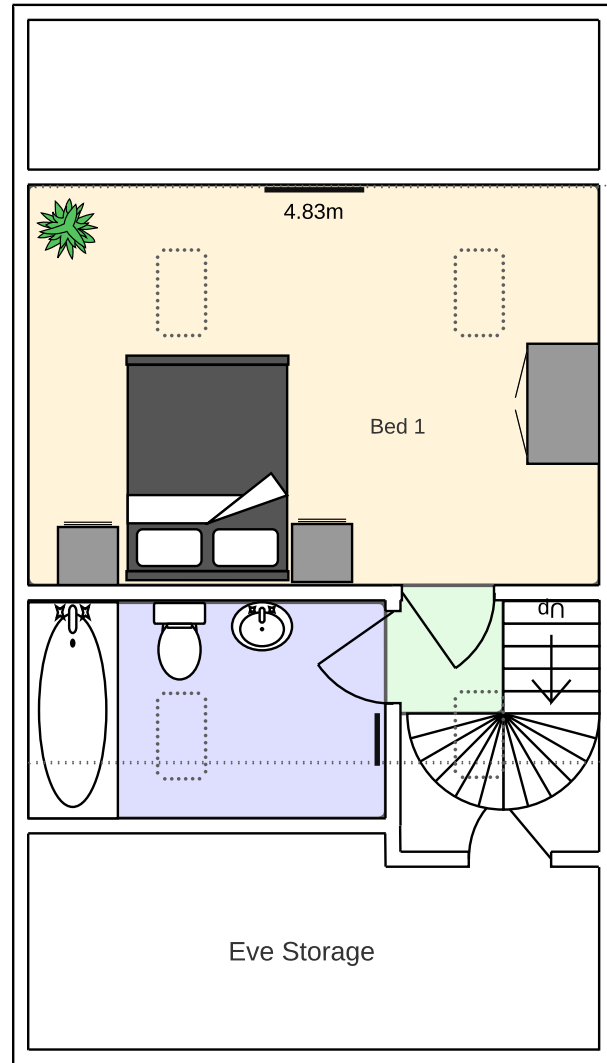
Skittle Alley  
 Apartments -  
 Coleford GL16 8BA  
 2 Bed Apartment Plot  
 3 & 4



**Room Sizes:**

Kitchen Lounge	- 4.8m x 6.0m
Bedroom 1	- 4.8m x 3.0m
Bedroom 2	- 4.8m x 2.6m
Bathroom	- 3.0m x 1.8m

Please note that the location of doors, windows and other items are approximate and this floorplan is designed to be used for illustrative purposes only.



**Key Features:**

- 673 Sqft Living space
- 166 Sqft storage
- Off road parking
- Fibre internet
- Spacious 2 bed